

FLEET

ROOFTOP

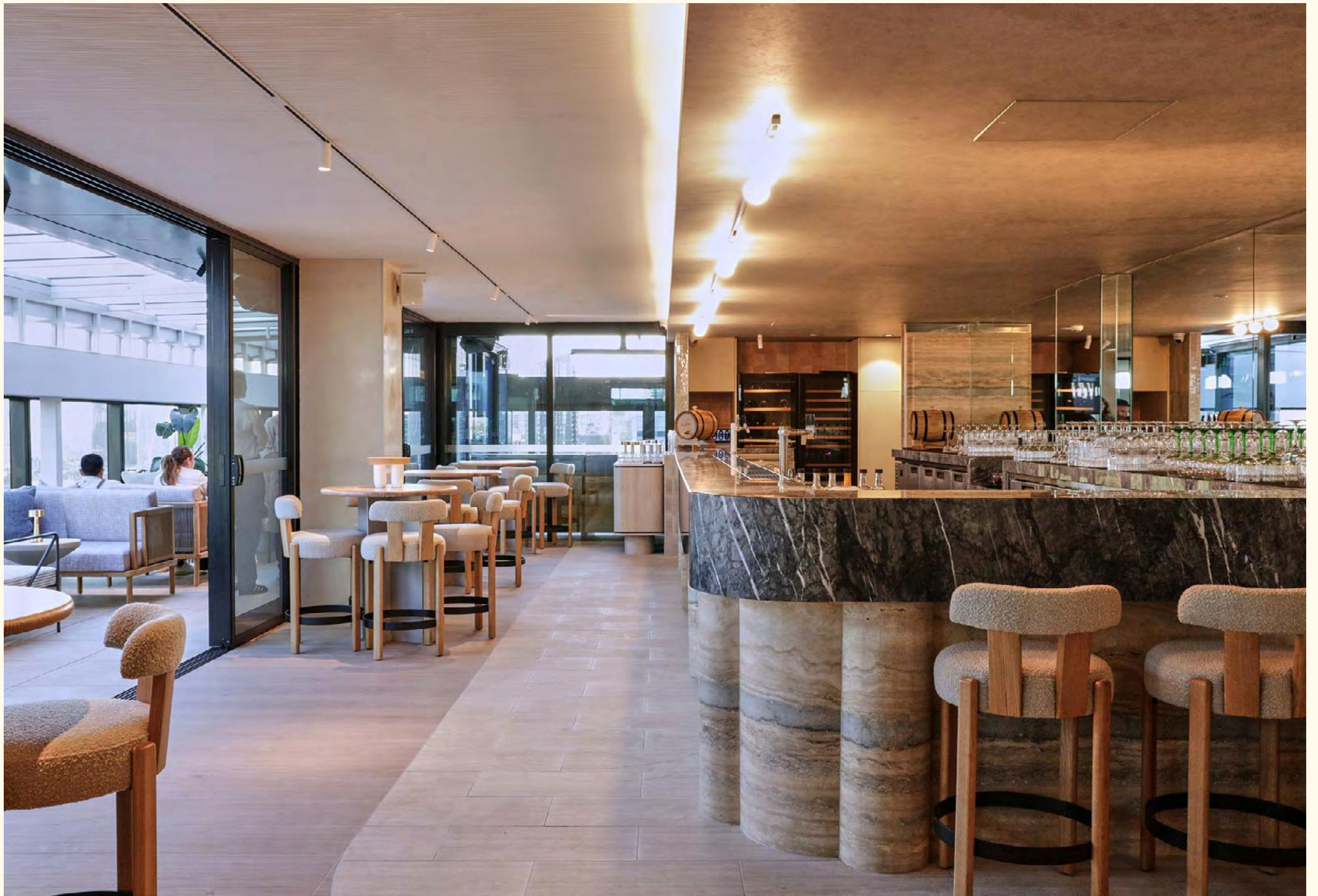
BAR



Welcome to Fleet rooftop bar, where inspiration meets elevation.
We're thrilled to host your event and provide an unforgettable
experience for you and your attendees.

Nestled high above the city skyline, Fleet is more than just a venue;
it's a beacon of sophistication, offering unparalleled views and a
vibrant atmosphere that sets the stage for extraordinary moments.
Whether you're here for business or pleasure, we're committed
to exceeding your expectations and ensuring your time with us is
nothing short of exceptional.

As you gather with colleagues, collaborators, or friends, let the
energy of our rooftop bar ignite your creativity and fuel meaningful
connections. Whether you're savouring our signature cocktails,
indulging in gourmet delights, or simply basking in the beauty of the
city below, know that you're in good hands.





Ouz Venue

Fleet offers panoramic views of the city's most iconic and picturesque views overlooking Flinders Street Station, Yarra river, Southbank and beyond, creating a stunning backdrop for your event. With a sleek and modern design, our rooftop space seamlessly blends indoor comfort with outdoor allure.

Here's what you can expect:

SIGNATURE COCKTAILS

Elevate your event with our expertly crafted cocktails, featuring a mix of classic favorites and innovative creations.

CULINARY DELIGHTS

From savory appetizers to indulgent desserts, our culinary team will tantalize your taste buds with flavors that inspire.

PROFESSIONAL STAFF

Our dedicated event staff is committed to ensuring every aspect of your event runs smoothly. From initial planning to day-of coordination, we'll handle all the details so you can focus on what matter the most – your guests and your agenda.

LIVE ENTERTAINMENT

Immerse yourself in the vibrant atmosphere with live music performances, DJ sets, and special events that keep the energy flowing late into the night. arrangements ensure a seamless event experience.

Fleet Rooftop Bar

Capacity

Fleet can accommodate up to 80 guests for standing receptions and 60 guests for seated events.

Audiovisual Equipment

Audiovisual capabilities are available to enhance presentations, performances, and other multimedia experiences.

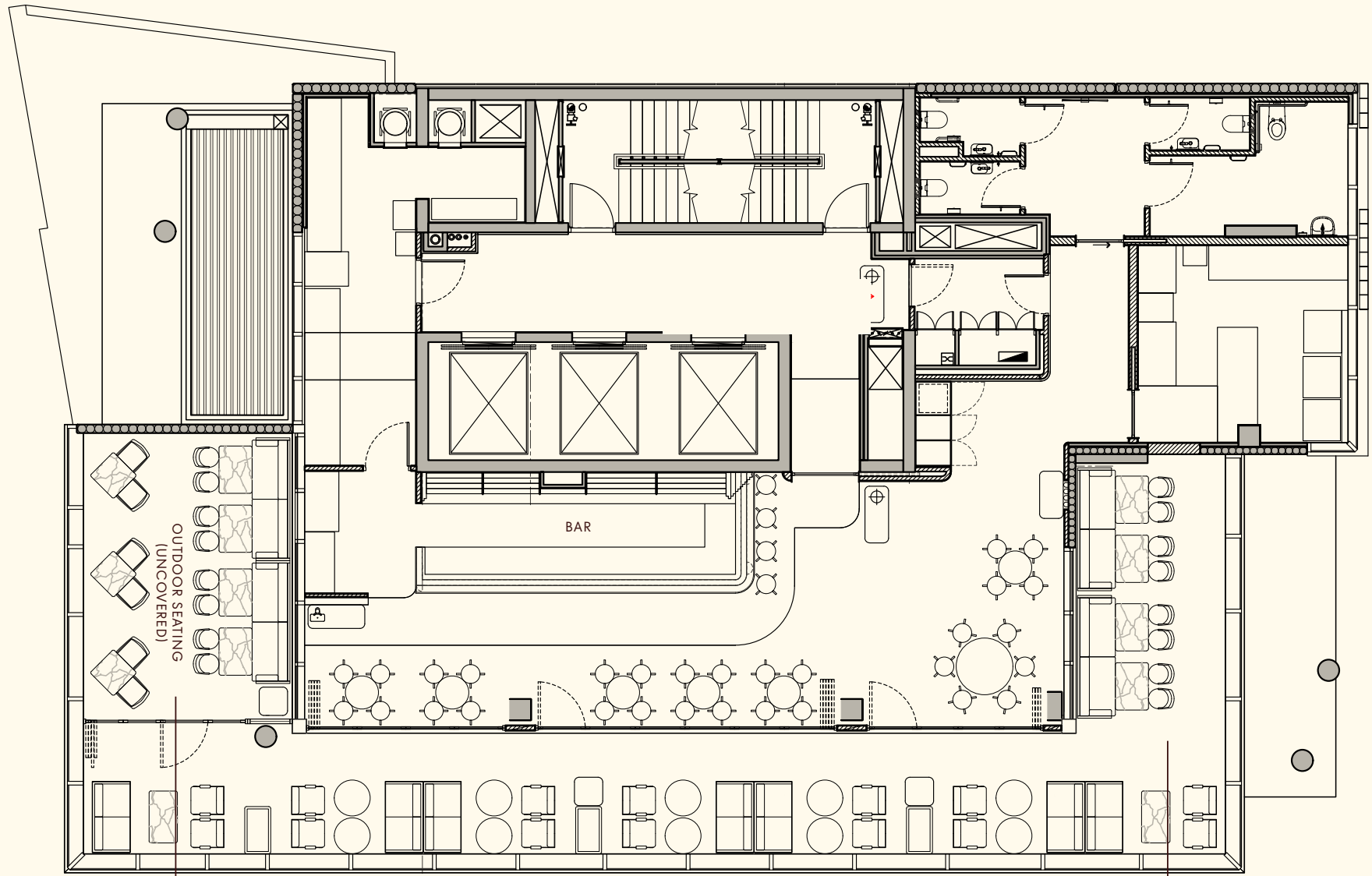
Accessibility

Our rooftop bar is wheelchair accessible, with elevator access provided for guests with mobility needs.

Hours of Operation

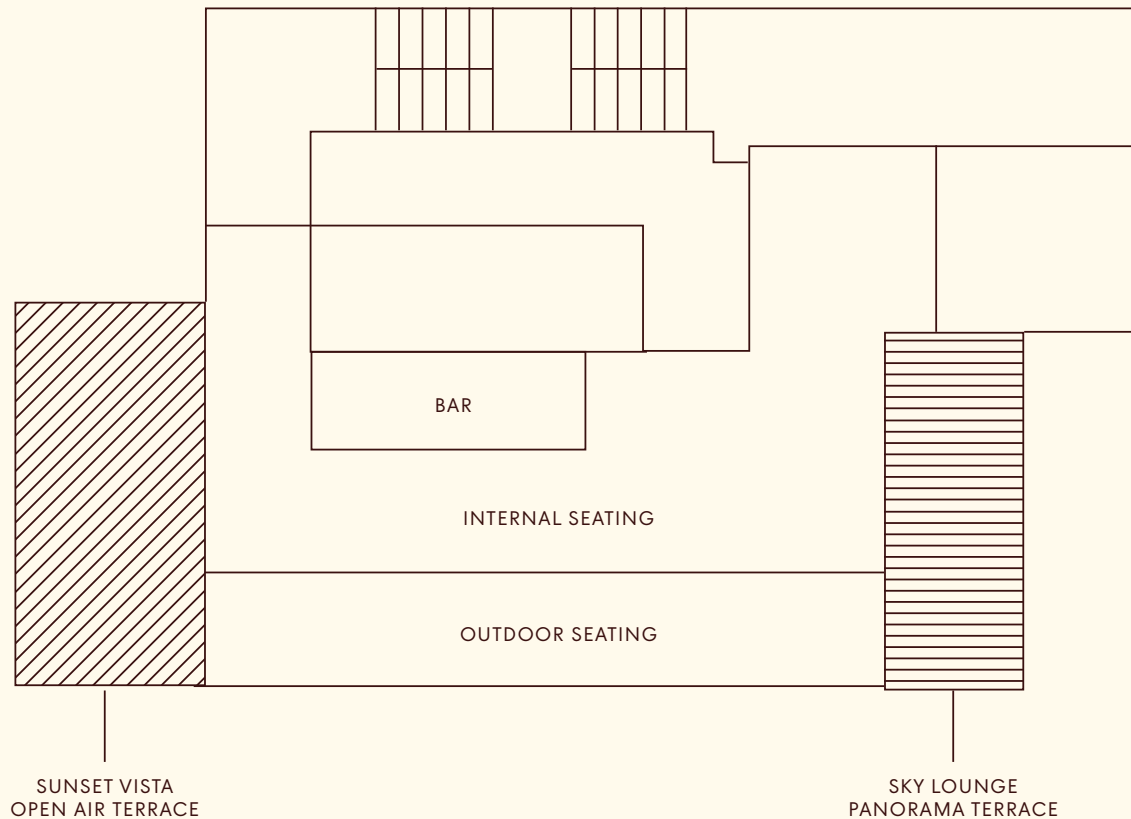
Fleet is open
Tuesday – Thursday
3:00pm- 11:00pm
Friday - Saturday
3:00pm- 12:00 am
available for private events.





SUNSET VISTA
OPEN AIR TERRACE

SKY LOUNGE
PANORAMA TERRACE



Our Rooftop bar is comprised of two distinct areas including one outdoor seating, which can be open in the summer, or closed in the winter; an open-air terrace, and one private panorama terrace, which is the perfect setting for intimate events meant to impress.

Fleet Sunset Vista Open-air Terrace

Our spacious terrace provides ample room for networking, breakout session, or simply soaking in the sights and sounds of the city. (Outdoor seating uncovered equipped with heaters)

Capacity — 25 People

Fleet Sky Lounge Panorama Terrace

For more intimate events, our indoor lounge offers a cozy retreat without sacrificing the breathtaking views. Comfortable seating arrangements ensure a seamless event experience.

Capacity — 20 People

Fleet Rooftop Packages

Fleet Package 1

6 piece set canapes menu
Beverage Package (2 hours)

\$95PP

Fleet Package 2

1 signature cocktail on arrival
6 piece set canape menu
2 substantial item of your choice
Beverage Package (3 hours)

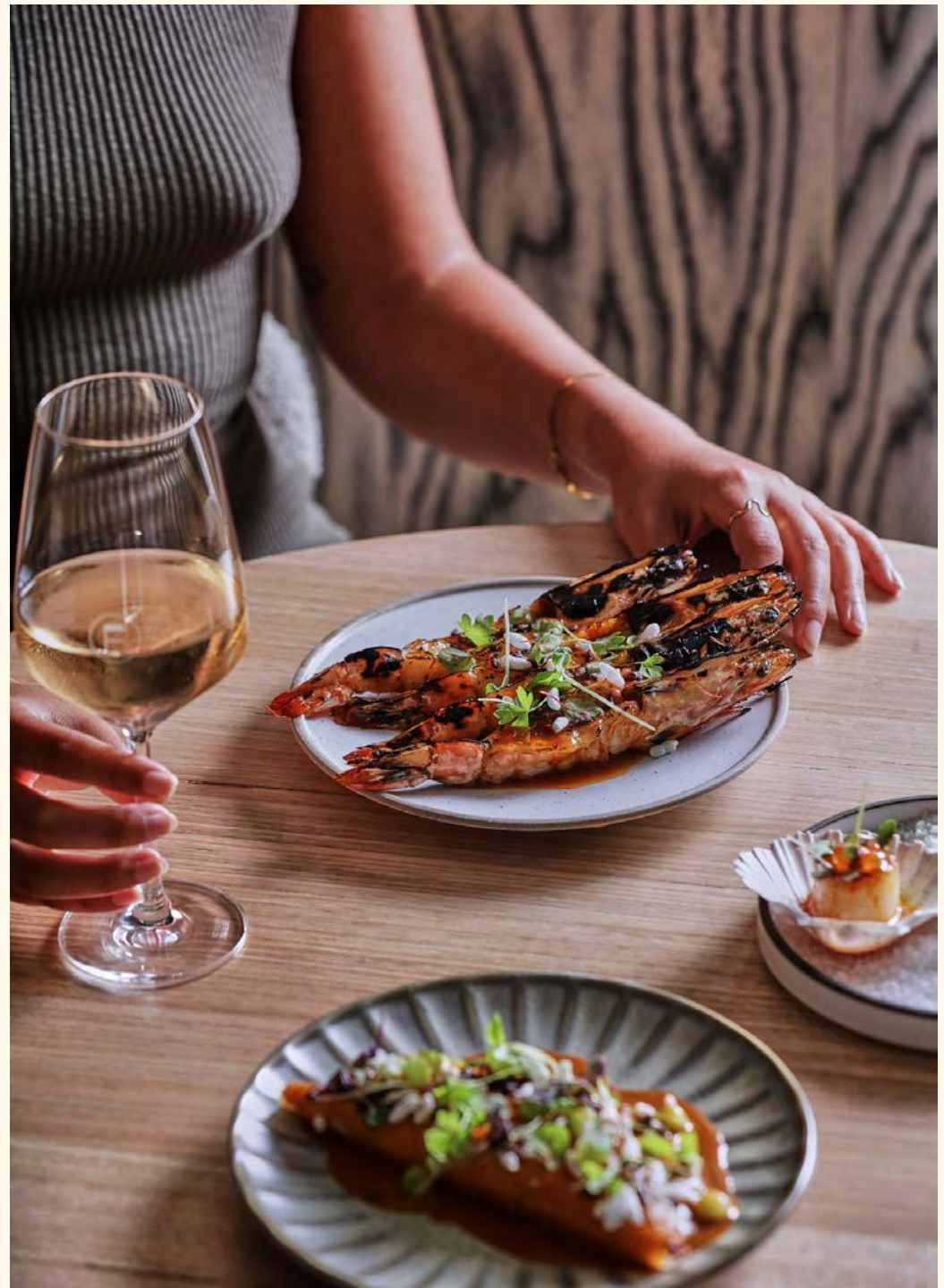
\$115PP

Fleet Package 3

1 signature cocktail on arrival
6 piece set canape menu
2 substantial item of your choice
Gourmet Cheese Section
Premium Beverage Package (3 hours)

\$145PP

Packages are based on 20 guests
Minimum spend \$95 per person
(Nov & Dec -\$115per person)





Canape Packages

Cold

Charcoal chicken liver parfait cone, corn powder.

Torched salmon, furikake, apple gel, sorrel.

Éclair with bush tomato, whipped Persian feta, basil.

Semolina puff, Prosciutto, avocado mousse, dried feta.

Pacific oysters, seaweed mignonette.

Hot

Prawn Beignet, valley caviar, lemon myrtle mayo.

Slow roasted duck tart, chive mayo, crispy celeriac nest.

Braised pork cheek croquette, herb mayo, nasturtium.

Sea scallop, champagne sabayon, diced onions.

Charcoal mushroom arancini, truffles, mushroom ketchup

Substantial

Southern spiced king fish croquette, granny apple remoulade.

Braised beef cheek, sweet potato foam.

Pita pockets, grilled chicken, herbs, lemon chili dressing.

Chef's selection of 3 meat platter with
condiments and preserves.

Chef's selection of 3 cheese platter with house
preserves, nuts, breads, crackers.

Beverage Packages

Standard

2 Hours — \$45PP

3 Hours — \$55PP

4 Hours — \$65PP

SPARKLING

Soumah Blanc de Blancs, Yarra Valley

WHITE WINE

Vidal Reserve Sauvignon Blanc, Marlborough

ROSE

Port Philip Estate Rose, Mornington Peninsula

RED WINE

Banonockburn 1314 Shiraz, Geelong

BEER

Boat rocker Pilsner

Non Alcoholic

Soft drinks

CONSUMPTION BAR TAB

For a flexible beverage option you can opt for a consumption bar tab.
Choose your desired beers & wines from our extensive beverage list.





Beverage Packages

Premium

2 Hours — \$55PP

3 Hours — \$65PP

4 Hours — \$75PP

SPARKLING

Soumah Blanc de Blancs, Yarra Valley

WHITE WINE

Fleet Lichen Pinot Gris, Gippsland

ROSE

Fleet Lichen Rose, Gippsland

RED WINE

Fleet Lichen Pinot Noir, Gippsland

BEER

Boat rocker Pilsner

Non Alcoholic

Soft drinks

CONSUMPTION BAR TAB

For a flexible beverage option you can opt for a consumption bar tab.
Choose your desired beers & wines from our extensive beverage list.



We're excited to collaborate with you and make your event a resounding success. At Fleet, the sky's the limit — let's elevate your event to new heights!

Contact Information

Email: Info@fleetrooftopbar.com.au

Phone: 03 9958 9187